



Alira Estate
Cupples Crescent, Berwick
Lot 3058

Facade: Botany

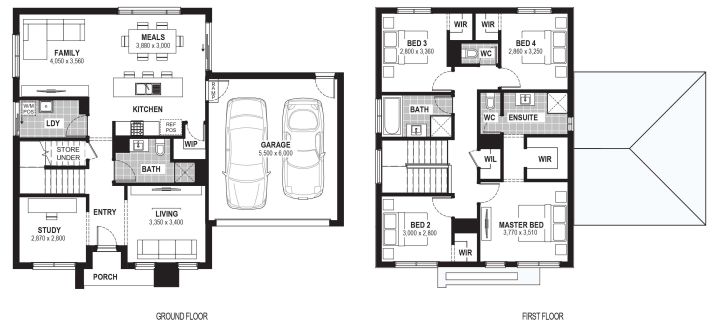
House: 23.94 sq **Land:** 349 m2

4
 3
 2
 2

Lambert 24

Inclusions

- Bluescope Steel House Frame
- Colorbond Roof with Sarking
- 7 Star Energy Efficient
- European-styled (uPVC) Double Glazed Windows & Doors
- Tiled Splashback to Kitchen
- Range of Colour Schemes
- Flyscreens with Aluminium Mesh
- Remote Garage Door with Openers
- Bushfire Compliance up to BAL 12.5
- 50 Year Structural Guarantee
- Laminate Flooring & Carpet Throughout
- Site Costs Allowance Included
- 2550mm Ceiling Height
- 900mm Appliances
- Caesarstone Benchtops to Kitchen & Vanities
- Clothesline
- Concrete Driveway up to 35qm
- Opticom Package
- Titled Land



Contact:

John Tipene
0497 072 187
johntipene@jgkinghomes.com.au



*Conditions apply. Speak to your New Home Advisor for further details